

Name of the Land Owning Companies

- 1. Adharsela Dealers Private Limited.
- 2. Adharsela Tie Up Private Limited.
- 3. Anandam Marketing Private Limited.
- 4. Anandam Mercantile Private Limited.
- 5. Asval Complex Private Limited.
- 6. Asbjaha Complex Private Limited.
- 7. Asbjaha Housing Private Limited.
- 8. Average Enclave Private Limited.
- 9. Average Heights Private Limited.
- 10. Average Properties Private Limited.
- 11. Average Residency Private Limited.
- 12. Bagmati Housing Private Limited.
- 13. Bagmati Shoppers Private Limited.
- 14. Blockdeal Infra Private Limited.
- 15. Blockdeal Infracon Private Limited.
- 16. Blockdeal Nirman Private Limited.
- 17. Blockdeal Real Estate Private Limited.
- 18. Blockdeal Residency Private Limited.
- 19. Blockdeal Traders Private Limited.
- 20. Coolath Infracon Private Limited.
- 21. Coolath Infracon Private Limited.
- 22. Coolath Infracon Private Limited.
- 23. Coolath Infracon Private Limited.
- 24. Coolath Infracon Private Limited.
- 25. Coolath Infracon Private Limited.
- 26. Coolath Infracon Private Limited.
- 27. Coolath Infracon Private Limited.
- 28. Coolath Infracon Private Limited.
- 29. Coolath Infracon Private Limited.
- 30. Coolath Infracon Private Limited.
- 31. Coolath Infracon Private Limited.
- 32. Coolath Infracon Private Limited.
- 33. Coolath Infracon Private Limited.
- 34. Coolath Infracon Private Limited.
- 35. Coolath Infracon Private Limited.
- 36. Coolath Infracon Private Limited.
- 37. Coolath Infracon Private Limited.
- 38. Coolath Infracon Private Limited.
- 39. Coolath Infracon Private Limited.
- 40. Coolath Infracon Private Limited.
- 41. Coolath Infracon Private Limited.
- 42. Coolath Infracon Private Limited.
- 43. Coolath Infracon Private Limited.
- 44. Coolath Infracon Private Limited.
- 45. Coolath Infracon Private Limited.
- 46. Coolath Infracon Private Limited.
- 47. Coolath Infracon Private Limited.
- 48. Coolath Infracon Private Limited.
- 49. Coolath Infracon Private Limited.
- 50. Coolath Infracon Private Limited.
- 51. Coolath Infracon Private Limited.
- 52. Coolath Infracon Private Limited.
- 53. Coolath Infracon Private Limited.
- 54. Coolath Infracon Private Limited.
- 55. Coolath Infracon Private Limited.
- 56. Coolath Infracon Private Limited.
- 57. Coolath Infracon Private Limited.
- 58. Coolath Infracon Private Limited.
- 59. Coolath Infracon Private Limited.
- 60. Coolath Infracon Private Limited.
- 61. Coolath Infracon Private Limited.
- 62. Coolath Infracon Private Limited.
- 63. Coolath Infracon Private Limited.
- 64. Coolath Infracon Private Limited.
- 65. Coolath Infracon Private Limited.
- 66. Coolath Infracon Private Limited.
- 67. Coolath Infracon Private Limited.
- 68. Coolath Infracon Private Limited.
- 69. Coolath Infracon Private Limited.
- 70. Coolath Infracon Private Limited.
- 71. Coolath Infracon Private Limited.
- 72. Coolath Infracon Private Limited.
- 73. Coolath Infracon Private Limited.
- 74. Coolath Infracon Private Limited.
- 75. Coolath Infracon Private Limited.
- 76. Coolath Infracon Private Limited.
- 77. Coolath Infracon Private Limited.
- 78. Coolath Infracon Private Limited.
- 79. Coolath Infracon Private Limited.
- 80. Coolath Infracon Private Limited.
- 81. Coolath Infracon Private Limited.
- 82. Coolath Infracon Private Limited.
- 83. Coolath Infracon Private Limited.
- 84. Coolath Infracon Private Limited.
- 85. Coolath Infracon Private Limited.
- 86. Coolath Infracon Private Limited.
- 87. Coolath Infracon Private Limited.
- 88. Coolath Infracon Private Limited.
- 89. Coolath Infracon Private Limited.
- 90. Coolath Infracon Private Limited.
- 91. Coolath Infracon Private Limited.
- 92. Coolath Infracon Private Limited.
- 93. Coolath Infracon Private Limited.
- 94. Coolath Infracon Private Limited.
- 95. Coolath Infracon Private Limited.
- 96. Coolath Infracon Private Limited.
- 97. Coolath Infracon Private Limited.
- 98. Coolath Infracon Private Limited.
- 99. Coolath Infracon Private Limited.
- 100. Coolath Infracon Private Limited.

WE HEREBY CERTIFY THAT THE FOUNDATION AND SUPERSTRUCTURE OF THE BUILDING PROPOSED FOR CONSTRUCTION ON MOUZA - PATULIA, DAG NOS. - 698 (P), 697, 696, 696, 700, 737 (P), 743, 744 (P), 743, 750, 754, 755, 756, 757, 758, 759, 760, 761, 762, 766 (P), 768, 769, 770, 771, 772, 773, 774, 777, 778, 844 (P), 845 (P), 846, 847 (P), 849, 850, 851, 853, 854, 855, 856, 857, 858, 859, 860, 861, 862, 863, 864, 865, 866, 867, 868, 869, 870, 871, 872, 873, 874, 875, 876, 877, 878, 879, 880, 881, 882, 883, 884, 885, 886, 887, 888, 889, 890, 891, 892, 893, 894, 895, 896, 897, 898, 899, 900, 901, 902, 903, 904, 905, 906, 907, 908, 909, 910, 911, 912, 913, 914, 915, 916, 917, 918, 919, 920, 921, 922, 923, 924, 925, 926, 927, 928, 929, 930, 931, 932, 933, 934, 935, 936, 937, 938, 939, 940, 941, 942, 943, 944, 945, 946, 947, 948, 949, 950, 951, 952, 953, 954, 955, 956, 957, 958, 959, 960, 961, 962, 963, 964, 965, 966, 967, 968, 969, 970, 971, 972, 973, 974, 975, 976, 977, 978, 979, 980, 981, 982, 983, 984, 985, 986, 987, 988, 989, 990, 991, 992, 993, 994, 995, 996, 997, 998, 999, 1000.

THE PLAN HAS BEEN PLANNED & DESIGNED IN COMPLIANCE OF THE 'THE WEST BENGAL MUNICIPAL BUILDING REGULATIONS 2007' FOLLOWED BY KHARDA MUNICIPALITY. THE 'GREATEST' MUNICIPALITY, ALL NORMS REGARDING BUILDING SAFETY INCLUDING: STRUCTURAL, STABILITY & FIRE SAFETY SHALL BE AS PER NBC.

**SANJAY KUMAR DUBEY**  
 (B. Arch., A.I.A.)  
 Reg. No. CA 18 / 1098  
 ARCHITECT (SL. NO. - 32/A)

**JAY PRAKASH BHARAT KUMAR AGRAWAL**  
 (B. Arch., A.I.A.)  
 Reg. No. CA 18 / 1098  
 ARCHITECT (SL. NO. - 32/A)

**SANJAY KUMAR DUBEY**  
 (B. Arch., A.I.A.)  
 Reg. No. CA 18 / 1098  
 ARCHITECT (SL. NO. - 32/A)

**JAY PRAKASH BHARAT KUMAR AGRAWAL**  
 (B. Arch., A.I.A.)  
 Reg. No. CA 18 / 1098  
 ARCHITECT (SL. NO. - 32/A)

**SANJAY KUMAR DUBEY**  
 (B. Arch., A.I.A.)  
 Reg. No. CA 18 / 1098  
 ARCHITECT (SL. NO. - 32/A)

**JAY PRAKASH BHARAT KUMAR AGRAWAL**  
 (B. Arch., A.I.A.)  
 Reg. No. CA 18 / 1098  
 ARCHITECT (SL. NO. - 32/A)

**SANJAY KUMAR DUBEY**  
 (B. Arch., A.I.A.)  
 Reg. No. CA 18 / 1098  
 ARCHITECT (SL. NO. - 32/A)

**JAY PRAKASH BHARAT KUMAR AGRAWAL**  
 (B. Arch., A.I.A.)  
 Reg. No. CA 18 / 1098  
 ARCHITECT (SL. NO. - 32/A)

**SANJAY KUMAR DUBEY**  
 (B. Arch., A.I.A.)  
 Reg. No. CA 18 / 1098  
 ARCHITECT (SL. NO. - 32/A)

**JAY PRAKASH BHARAT KUMAR AGRAWAL**  
 (B. Arch., A.I.A.)  
 Reg. No. CA 18 / 1098  
 ARCHITECT (SL. NO. - 32/A)

**SANJAY KUMAR DUBEY**  
 (B. Arch., A.I.A.)  
 Reg. No. CA 18 / 1098  
 ARCHITECT (SL. NO. - 32/A)

**JAY PRAKASH BHARAT KUMAR AGRAWAL**  
 (B. Arch., A.I.A.)  
 Reg. No. CA 18 / 1098  
 ARCHITECT (SL. NO. - 32/A)

KEY PLAN  
 N.T.S.

SCHEDULE OF DOORS & WINDOWS

NO.	SILL	LINTEL	SIZE
D	2150	1800X2150	
D1	2150	1100X2150	
D2	2150	1100X2150	
D3	2150	1100X2150	
D4	2150	1100X2150	
D5	2150	1100X2150	
D6	2150	1100X2150	
D7	2150	1100X2150	
D8	2150	1100X2150	
D9	2150	1100X2150	
D10	2150	1100X2150	
D11	2150	1100X2150	
D12	2150	1100X2150	
D13	2150	1100X2150	
D14	2150	1100X2150	
D15	2150	1100X2150	
D16	2150	1100X2150	
D17	2150	1100X2150	
D18	2150	1100X2150	
D19	2150	1100X2150	
D20	2150	1100X2150	
D21	2150	1100X2150	
D22	2150	1100X2150	
D23	2150	1100X2150	
D24	2150	1100X2150	
D25	2150	1100X2150	
D26	2150	1100X2150	
D27	2150	1100X2150	
D28	2150	1100X2150	
D29	2150	1100X2150	
D30	2150	1100X2150	
D31	2150	1100X2150	
D32	2150	1100X2150	
D33	2150	1100X2150	
D34	2150	1100X2150	
D35	2150	1100X2150	
D36	2150	1100X2150	
D37	2150	1100X2150	
D38	2150	1100X2150	
D39	2150	1100X2150	
D40	2150	1100X2150	
D41	2150	1100X2150	
D42	2150	1100X2150	
D43	2150	1100X2150	
D44	2150	1100X2150	
D45	2150	1100X2150	
D46	2150	1100X2150	
D47	2150	1100X2150	
D48	2150	1100X2150	
D49	2150	1100X2150	
D50	2150	1100X2150	
D51	2150	1100X2150	
D52	2150	1100X2150	
D53	2150	1100X2150	
D54	2150	1100X2150	
D55	2150	1100X2150	
D56	2150	1100X2150	
D57	2150	1100X2150	
D58	2150	1100X2150	
D59	2150	1100X2150	
D60	2150	1100X2150	
D61	2150	1100X2150	
D62	2150	1100X2150	
D63	2150	1100X2150	
D64	2150	1100X2150	
D65	2150	1100X2150	
D66	2150	1100X2150	
D67	2150	1100X2150	
D68	2150	1100X2150	
D69	2150	1100X2150	
D70	2150	1100X2150	
D71	2150	1100X2150	
D72	2150	1100X2150	
D73	2150	1100X2150	
D74	2150	1100X2150	
D75	2150	1100X2150	
D76	2150	1100X2150	
D77	2150	1100X2150	
D78	2150	1100X2150	
D79	2150	1100X2150	
D80	2150	1100X2150	
D81	2150	1100X2150	
D82	2150	1100X2150	
D83	2150	1100X2150	
D84	2150	1100X2150	
D85	2150	1100X2150	
D86	2150	1100X2150	
D87	2150	1100X2150	
D88	2150	1100X2150	
D89	2150	1100X2150	
D90	2150	1100X2150	
D91	2150	1100X2150	
D92	2150	1100X2150	
D93	2150	1100X2150	
D94	2150	1100X2150	
D95	2150	1100X2150	
D96	2150	1100X2150	
D97	2150	1100X2150	
D98	2150	1100X2150	
D99	2150	1100X2150	
D100	2150	1100X2150	

CERTIFICATE OF STRUCTURAL STABILITY

WE HEREBY CERTIFY THAT THE FOUNDATION AND SUPERSTRUCTURE OF THE BUILDING PROPOSED FOR CONSTRUCTION ON MOUZA - PATULIA, DAG NOS. - 698 (P), 697, 696, 696, 700, 737 (P), 743, 744 (P), 743, 750, 754, 755, 756, 757, 758, 759, 760, 761, 762, 766 (P), 768, 769, 770, 771, 772, 773, 774, 777, 778, 844 (P), 845 (P), 846, 847 (P), 849, 850, 851, 853, 854, 855, 856, 857, 858, 859, 860, 861, 862, 863, 864, 865, 866, 867, 868, 869, 870, 871, 872, 873, 874, 875, 876, 877, 878, 879, 880, 881, 882, 883, 884, 885, 886, 887, 888, 889, 890, 891, 892, 893, 894, 895, 896, 897, 898, 899, 900, 901, 902, 903, 904, 905, 906, 907, 908, 909, 910, 911, 912, 913, 914, 915, 916, 917, 918, 919, 920, 921, 922, 923, 924, 925, 926, 927, 928, 929, 930, 931, 932, 933, 934, 935, 936, 937, 938, 939, 940, 941, 942, 943, 944, 945, 946, 947, 948, 949, 950, 951, 952, 953, 954, 955, 956, 957, 958, 959, 960, 961, 962, 963, 964, 965, 966, 967, 968, 969, 970, 971, 972, 973, 974, 975, 976, 977, 978, 979, 980, 981, 982, 983, 984, 985, 986, 987, 988, 989, 990, 991, 992, 993, 994, 995, 996, 997, 998, 999, 1000.

THE PLAN HAS BEEN PLANNED & DESIGNED IN COMPLIANCE OF THE 'THE WEST BENGAL MUNICIPAL BUILDING REGULATIONS 2007' FOLLOWED BY KHARDA MUNICIPALITY. THE 'GREATEST' MUNICIPALITY, ALL NORMS REGARDING BUILDING SAFETY INCLUDING: STRUCTURAL, STABILITY & FIRE SAFETY SHALL BE AS PER NBC.

**SANJAY KUMAR DUBEY**  
 (B. Arch., A.I.A.)  
 Reg. No. CA 18 / 1098  
 ARCHITECT (SL. NO. - 32/A)

**JAY PRAKASH BHARAT KUMAR AGRAWAL**  
 (B. Arch., A.I.A.)  
 Reg. No. CA 18 / 1098  
 ARCHITECT (SL. NO. - 32/A)

**SANJAY KUMAR DUBEY**  
 (B. Arch., A.I.A.)  
 Reg. No. CA 18 / 1098  
 ARCHITECT (SL. NO. - 32/A)

**JAY PRAKASH BHARAT KUMAR AGRAWAL**  
 (B. Arch., A.I.A.)  
 Reg. No. CA 18 / 1098  
 ARCHITECT (SL. NO. - 32/A)

**SANJAY KUMAR DUBEY**  
 (B. Arch., A.I.A.)  
 Reg. No. CA 18 / 1098  
 ARCHITECT (SL. NO. - 32/A)

**JAY PRAKASH BHARAT KUMAR AGRAWAL**  
 (B. Arch., A.I.A.)  
 Reg. No. CA 18 / 1098  
 ARCHITECT (SL. NO. - 32/A)

**SANJAY KUMAR DUBEY**  
 (B. Arch., A.I.A.)  
 Reg. No. CA 18 / 1098  
 ARCHITECT (SL. NO. - 32/A)

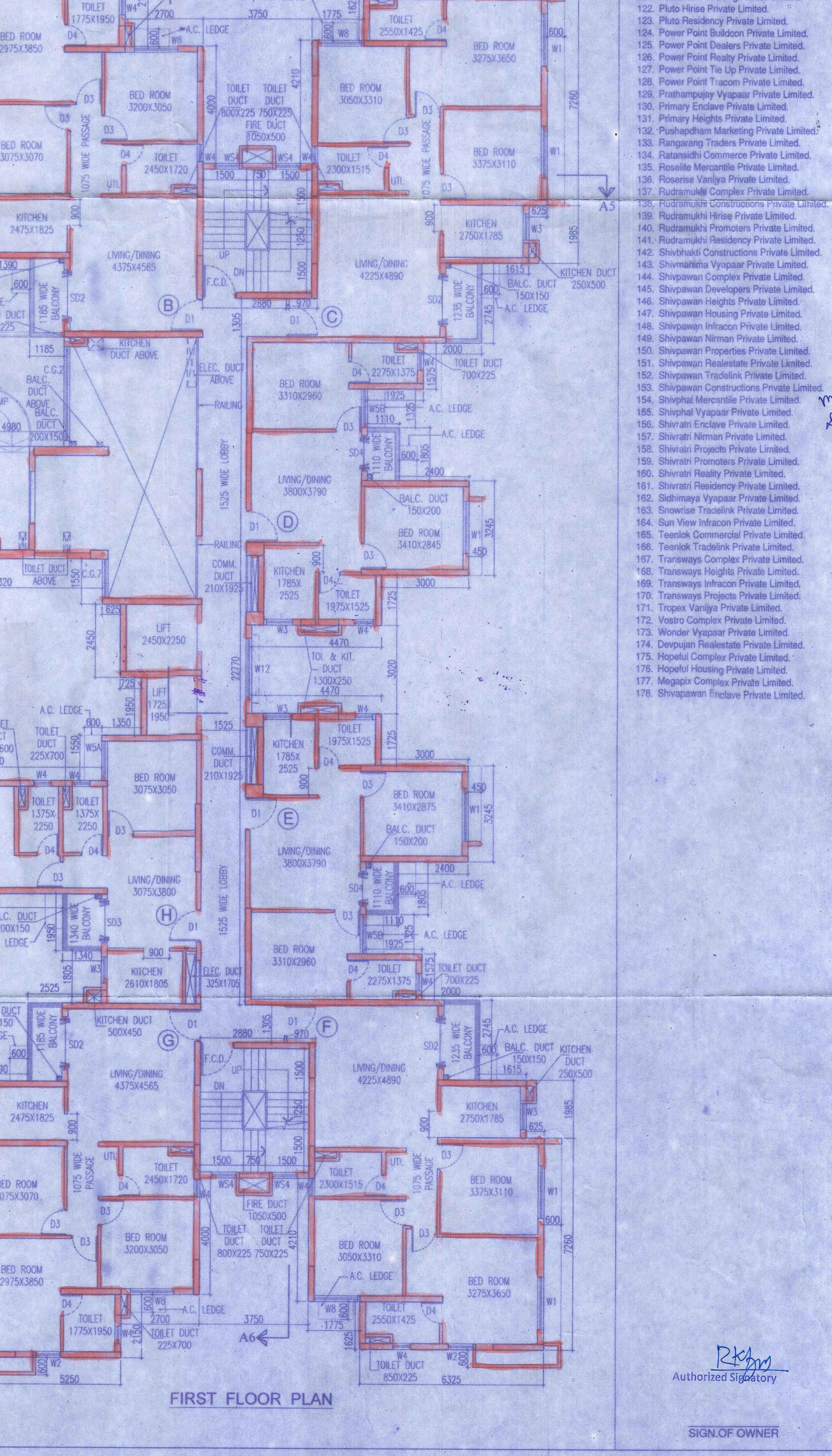
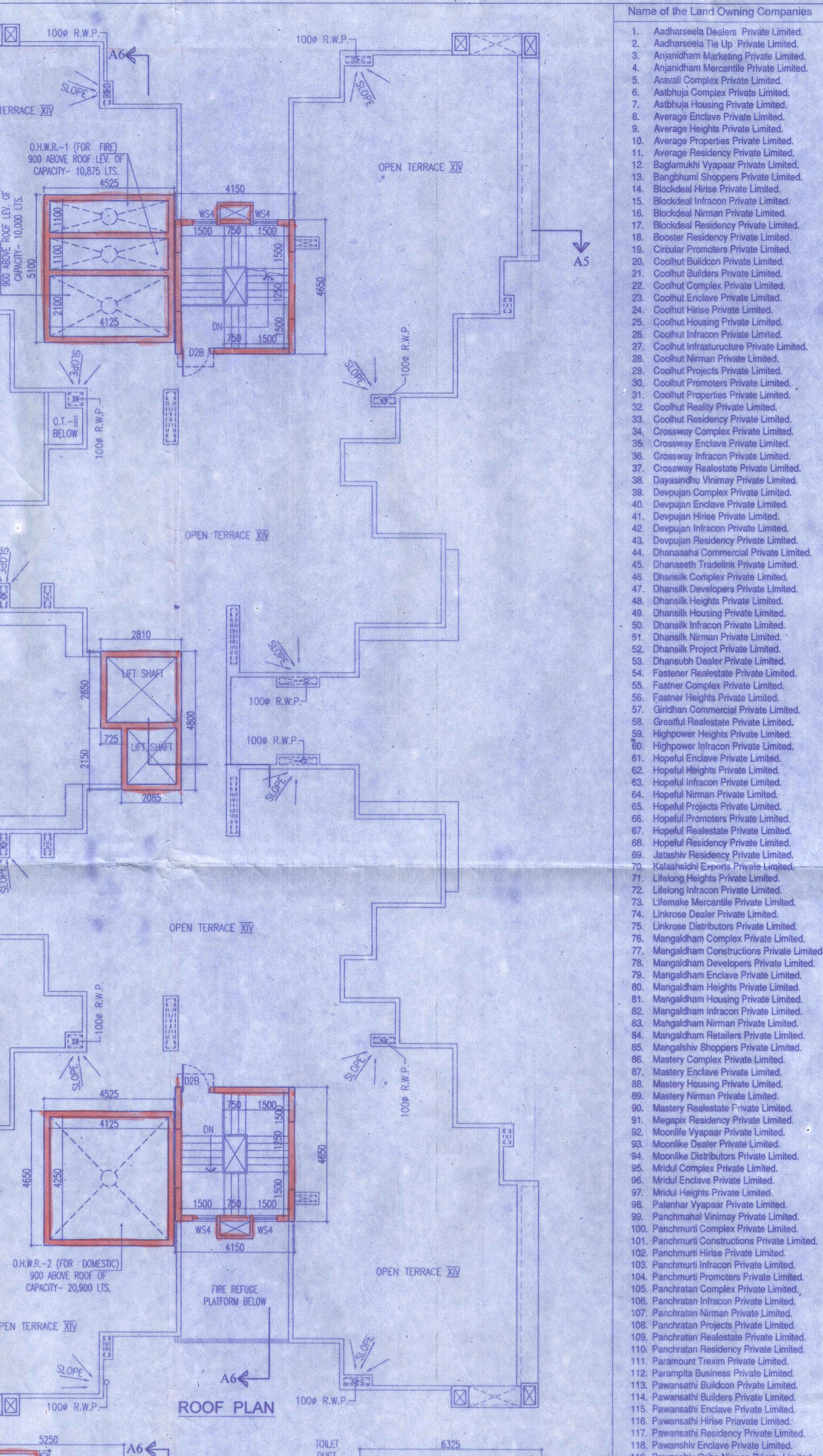
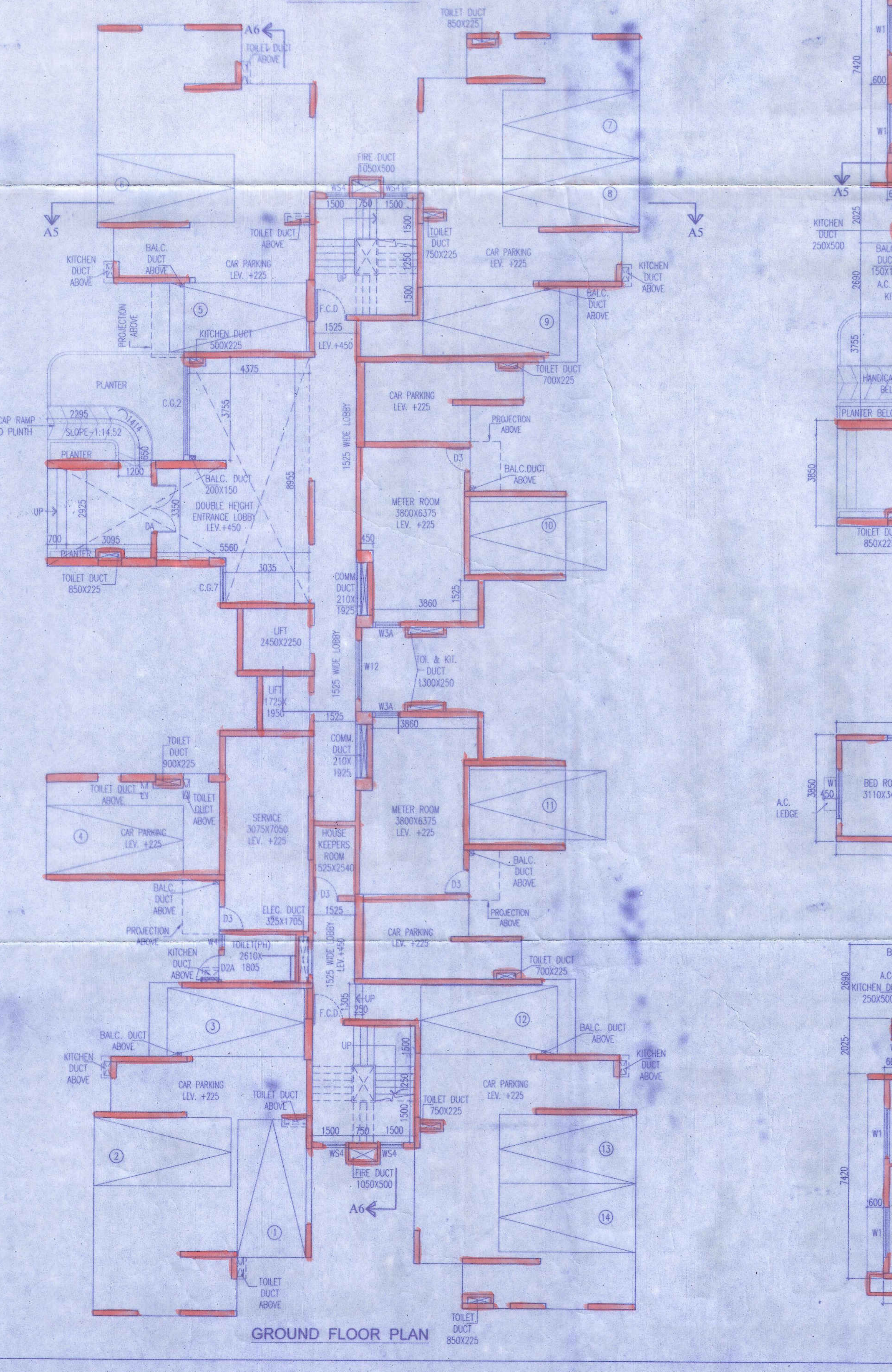
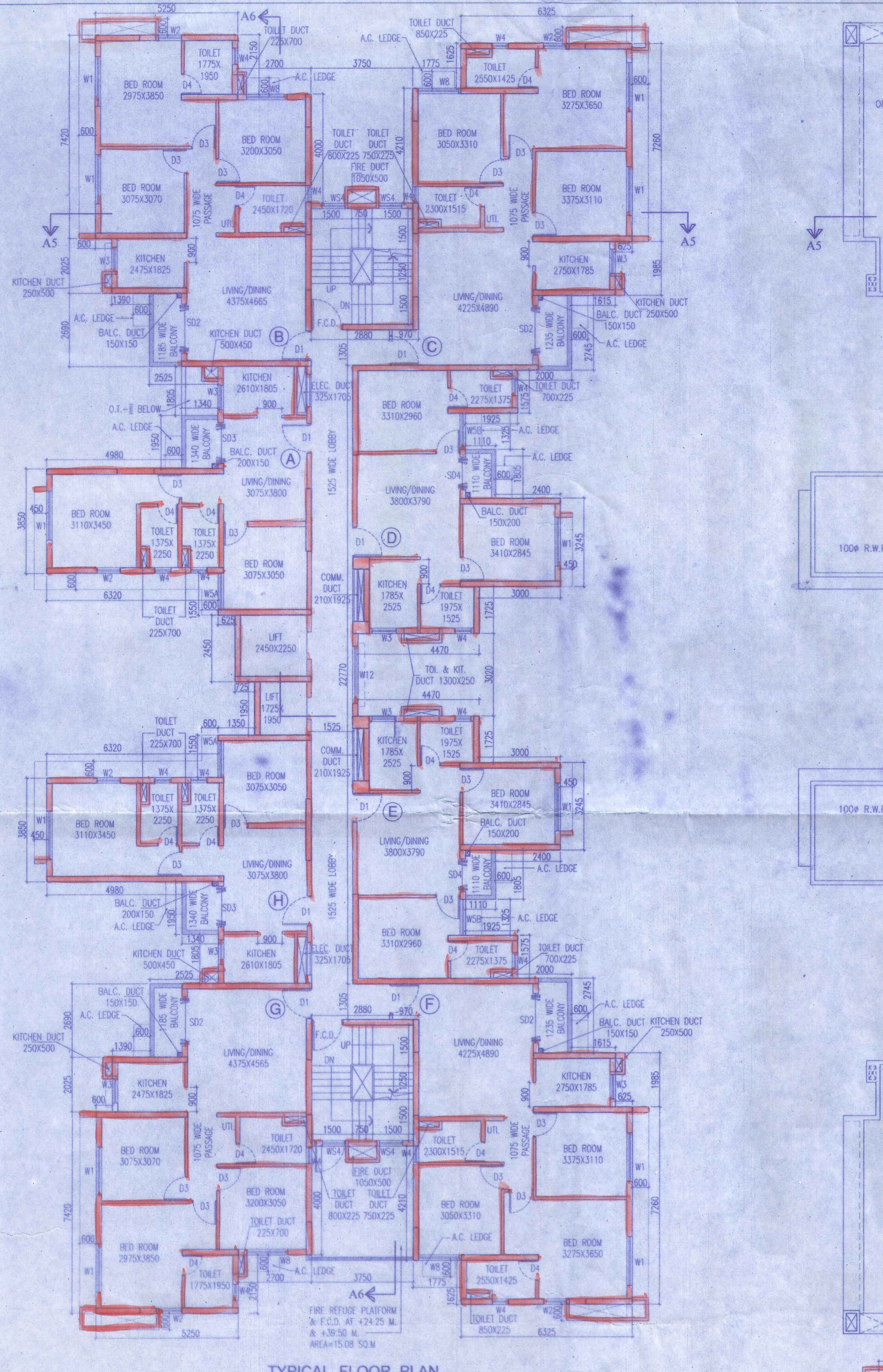
**JAY PRAKASH BHARAT KUMAR AGRAWAL**  
 (B. Arch., A.I.A.)  
 Reg. No. CA 18 / 1098  
 ARCHITECT (SL. NO. - 32/A)

**SANJAY KUMAR DUBEY**  
 (B. Arch., A.I.A.)  
 Reg. No. CA 18 / 1098  
 ARCHITECT (SL. NO. - 32/A)

**JAY PRAKASH BHARAT KUMAR AGRAWAL**  
 (B. Arch., A.I.A.)  
 Reg. No. CA 18 / 1098  
 ARCHITECT (SL. NO. - 32/A)

**SANJAY KUMAR DUBEY**  
 (B. Arch., A.I.A.)  
 Reg. No. CA 18 / 1098  
 ARCHITECT (SL. NO. - 32/A)

**JAY PRAKASH BHARAT KUMAR AGRAWAL**  
 (B. Arch., A.I.A.)  
 Reg. No. CA 18 / 1098  
 ARCHITECT (SL. NO. - 32/A)



PROJECT -  
 ADDITION OF 4 NOS. RESIDENTIAL BLOCKS (NOS. (G-XII) STORED NAMEDLY - 8 & 9 AND 2025, (G-XIII) STORED NAMEDLY - 30 & 30) AND 1 NO. (G-III) STORED COMMERCIAL BLOCK WITH REVISED OF 4 NOS. BLOCKS (NOS. (G-XII) STORED NAMEDLY - 1E,1F,1G,4A,4B,4C AND 1 NO. (B-G-VII) STORED NAMEDLY - 3A) AND 8 NOS. SANCTIONED BLOCKS (NOS. (G-XII) STORED NAMEDLY - 1A, 1B, 1C, 1D, 2A, 2B, 2D AND 1 NO. (G-III) STORED NAMEDLY - 2) UNDER CONSTRUCTION WITH REFERENCE TO THE APPROVAL FOR CONSTRUCTION VIDE PERMISSION NO. - 3228/P/2016 DATED 10/04/16 AND OF 8 NOS. SANCTIONED BLOCKS - 4 NOS. BLOCKS (NAMEDLY - 1E,1F,1G,4A,4B,4C) HAS BEEN OBTAINED OCCUPANCY CERTIFICATE ON 05/04/2019 FROM BKP-II PANCHAYAT SAMITI, NORTH 24 PARGANAS IN RESIDENTIAL COMPLEX AT MOUZA - PATULIA, R.S. DAG NOS. - 698 (P), 697, 696, 696, 700, 737 (P), 743, 744 (P), 743, 750, 754, 755, 756, 757, 758, 759, 760, 761, 762, 766 (P), 768, 769, 770, 771, 772, 773, 774, 777, 778, 844 (P), 845 (P), 846, 847 (P), 849, 850, 851, 853, 854, 855, 856, 857, 858, 859, 860, 861, 862, 863, 864, 865, 866, 867, 868, 869, 870, 871, 872, 873, 874, 875, 876, 877, 878, 879, 880, 881, 882, 883, 884, 885, 886, 887, 888, 889, 890, 891, 892, 893, 894, 895, 896, 897, 898, 899, 900, 901, 902, 903, 904, 905, 906, 907, 908, 909, 910, 911, 912, 913, 914, 915, 916, 917, 918, 919, 920, 921, 922, 923, 924, 925, 926, 927, 928, 929, 930, 931, 932, 933, 934, 935, 936, 937, 938, 939, 940, 941, 942, 943, 944, 945, 946, 947, 948, 949, 950, 951, 952, 953, 954, 955, 956, 957, 958, 959, 960, 961, 962, 963, 964, 965, 966, 967, 968, 969, 970, 971, 972, 973, 974, 975, 976, 977, 978, 979, 980, 981, 982, 983, 984, 985, 986, 987, 988, 989, 990, 991, 992, 993, 994, 995, 996, 997, 998, 999, 1000.

SCALE	DATE	DEALT	CHECKED
1 : 100	15.07.19	SUTAPA	